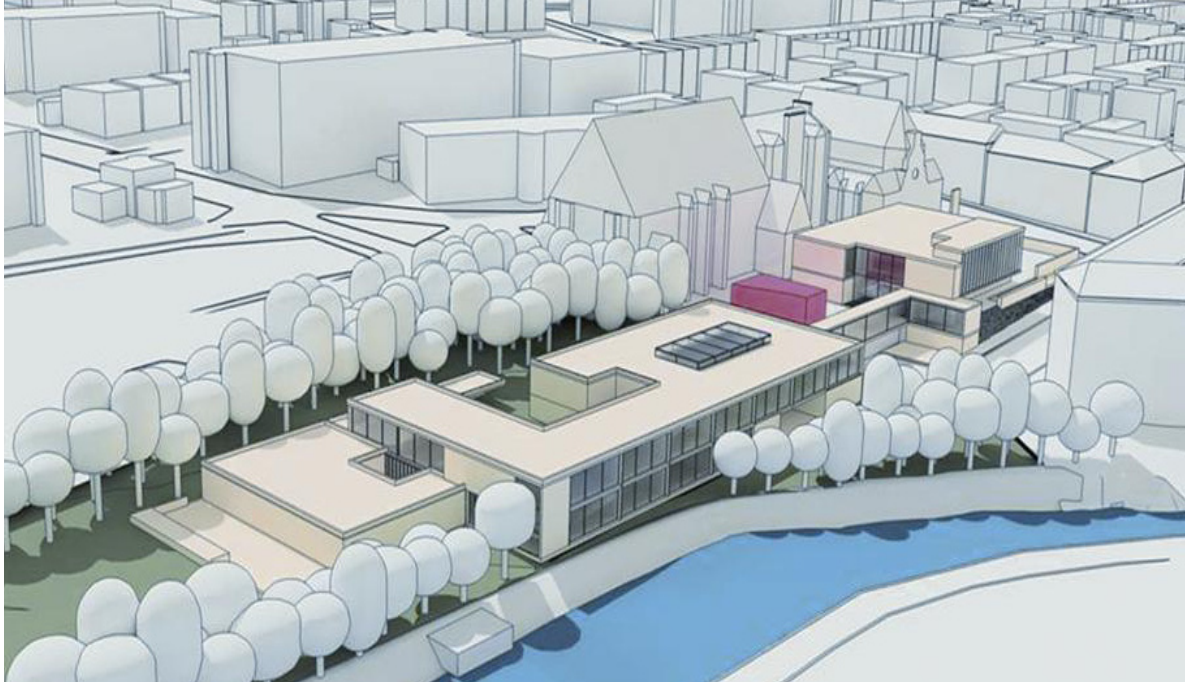


HILLHEAD SCHOOL



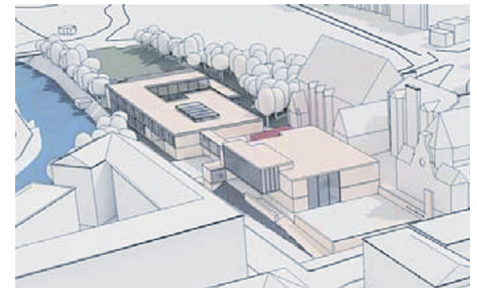
Hillhead Primary School is a new school in the west end of Glasgow.

The new school will have 21 classrooms for 666 pupils and an Early Years Centre nursery facility for 60 full time equivalent nursery children. The school is formed by two interconnected blocks, one containing the classrooms and nursery and the second containing the dining hall, gym, library and office.

Both blocks contain large openings in the floors. Smoke modelling (FDS) was used to demonstrate that escape passed these voids was safe. Further, the smoke modelling for the facilities block was combined with evacuation modelling (STEPS) to justify a single escape route from the first floor and extended travel distances within the classroom block. A light well between the nursery and the classrooms was justified as tempered glazing, despite the two areas being separate compartments. The result is a light and open school that would not have been possible without fire engineering input.

SAFE was able to provide value in this project by:

- Extended travel distances
- Escape past voids
- Single escape from 1st floor
- Destination of escape from staff areas in Nursery
- Compartmentation including tempered glazing.



Location

Glasgow, Scotland

Client

Glasgow City Council

Architect

JM Architects